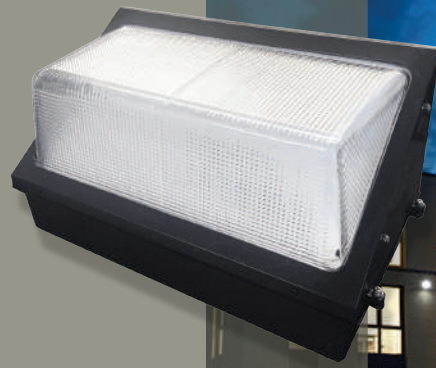


# LED WALL PACK LIGHT - 100W

**Features** Heavy duty die-cast aluminum housing, fully sealed to be dirt and bug proof. High quality shatterproof glass refractor. Internal secondary heat sink to optimize thermal transfer and maximize performance and life of LED. Driver is mounted in direct contact with the casting for a low operating temperature and long life. Easy low cost maintenance and repair. UL, CUL, certified to wet location, DLC Listed.

**Applications** Building entrances, stairways, walkways, underpasses, tunnels, loading docks, recreational areas, apartment buildings, institutions, and schools.



## Wall Pack 100W 5000K Spec

100W	rated power
↑ 75%	wattage saved
250-300W	suggested replacement
AC100~277V	input-voltage
>0.95	power factor
50~60Hz	frequency
110 LMW	lumens efficacy
11000Lm	lumens
5000K	color temperature
Ra>70	CRI
IP65	IP rating
130°	beam angle
wall mount	base type
frosted	lens
aluminum alloy	material
50,000 hours	LED emitter life
no	dimmable
5 years	warranty
17.0lbs	weight
dry & wet locations	working environment

**IGT** LED  
Lighting

model number IGTWP-0310050

